

# Asilomar Animal Statistics - Live Release Rates (LRR)

## Definition:

The Asilomar Accords provide a set of guidelines and clearly defined status categories to facilitate the data collection process and provide consistent (apples to apples) reporting across various agencies to establish fairly reported Live Release Rates.

The categories are clearly defined yet subjective and adaptable in nature as to allow specific organizations or communities the ability to adapt their specific guidelines to this common reporting methodology.

Animals under Asilomar are classified as (1) Healthy, (2) Treatable/Rehabilitatable, (3) Treatable/Manageable, and (4) Unhealthy/Untreatable.

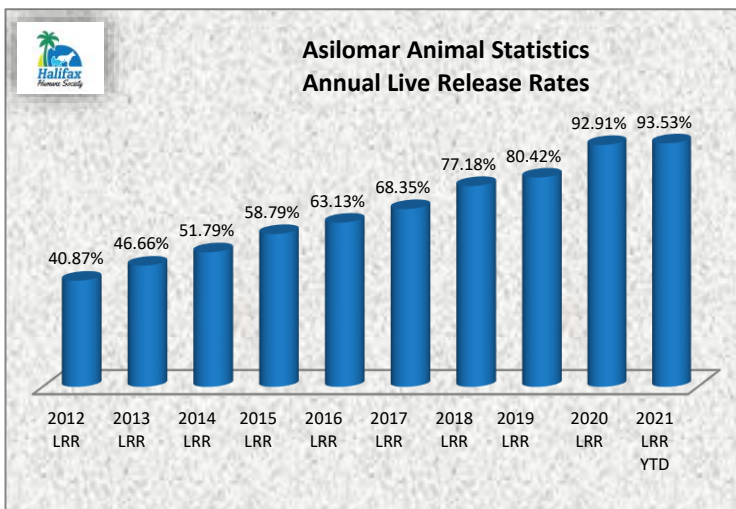
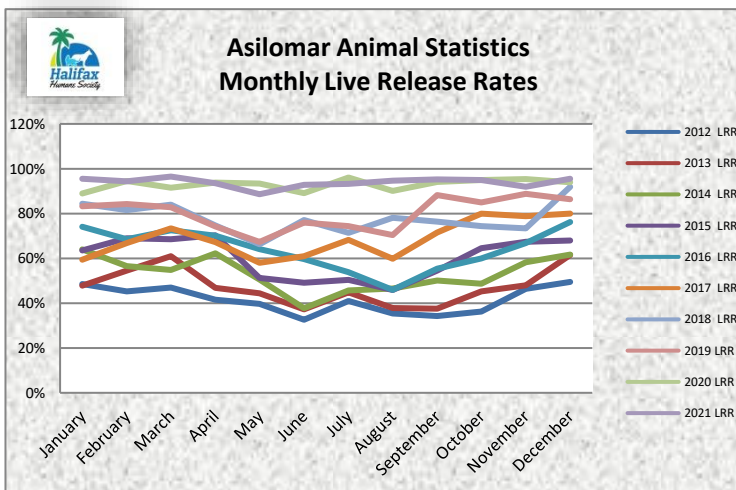
\*This report does not include owner/guardian requested euthanasia or animals that died or were lost in shelter care.

Dogs & Cats	2012 LRR	2013 LRR	2014 LRR	2015 LRR	2016 LRR	2017 LRR	2018 LRR	2019 LRR	2020 LRR	2021 LRR
January	48%	48%	64%	64%	74%	59%	84%	83%	89%	96%
February	45%	55%	57%	69%	69%	67%	81%	84%	95%	94%
March	47%	61%	55%	68%	73%	73%	84%	83%	92%	96%
April	42%	47%	62%	70%	70%	67%	75%	74%	94%	93%
May	40%	44%	51%	51%	64%	58%	66%	67%	93%	89%
June	33%	37%	38%	49%	60%	61%	77%	76%	89%	93%
July	41%	45%	46%	50%	54%	68%	71%	74%	96%	93%
August	35%	38%	47%	46%	46%	60%	78%	70%	90%	95%
September	34%	38%	50%	54%	55%	72%	76%	88%	94%	95%
October	36%	45%	49%	65%	60%	80%	74%	85%	95%	95%
November	46%	48%	58%	67%	67%	79%	73%	89%	95%	92%
December	49%	62%	62%	68%	76%	80%	92%	86%	94%	96%

Lowest Month of the year

Highest Month of the year

Dogs & Cats	2012 LRR	2013 LRR	2014 LRR	2015 LRR	2016 LRR	2017 LRR	2018 LRR	2019 LRR	2020 LRR	2021 LRR YTD
Annual	40.87%	46.66%	51.79%	58.79%	63.13%	68.35%	77.18%	80.42%	92.91%	93.53%



## Halifax Humane Society's use of Classifications:

**"Healthy"** includes all dogs and cats eight wks of age or older that have not manifested a behavioral, medical, or temperamental characteristics that could pose a health or safety threat or otherwise make the animal unsuitable for placement. In HHS terms, this is an animal that can come in today in good health, passes the intake exam, and behavioral evaluation without incident.

**"Treatable"** includes all dogs and cats that are either "Rehabilitatable" or "Manageable".

**"Rehabilitatable"** includes dogs and cats that are not currently "Healthy" but through medication, vaccination, grooming, foster, behavioral, or other care can be brought back to "Healthy". In HHS terms, this animal requires a round of medication, vaccinations, some grooming, a short stay with a Foster, or minor behavioral work to be ready for placement.

**"Manageable"** includes dogs and cats that are not currently "Healthy" and though not likely to become "Healthy" can have a satisfactory quality of life through medical, foster, behavioral, or other care provided on a long-term basis, this is provided the animal does not pose a significant risk to human health or safety or the health / safety of other animals. In HHS terms, this animal comes in an unhealthy state or possibly on maintenance medication and is diagnosed with a medical condition that will require lifelong care, or has specific behavioral issues such as incompatible with other animals or with children where a specific type of placement is required.

**"Unhealthy / Untreatable"** includes all dogs and cats who have severe behavioral or temperamental issues, are suffering from disease, injury, or congenital / hereditary conditions that adversely affect the animal's health, or are under eight weeks of age and not expected to survive even with reasonable care. In HHS terms, this animal is determined to be unsuitable through Veterinary exam, Behavioral assessment, by the reporting of the surrendering community's agent (ACO), by the reporting of the animal's former owner (Biter), or due to being too young to thrive.